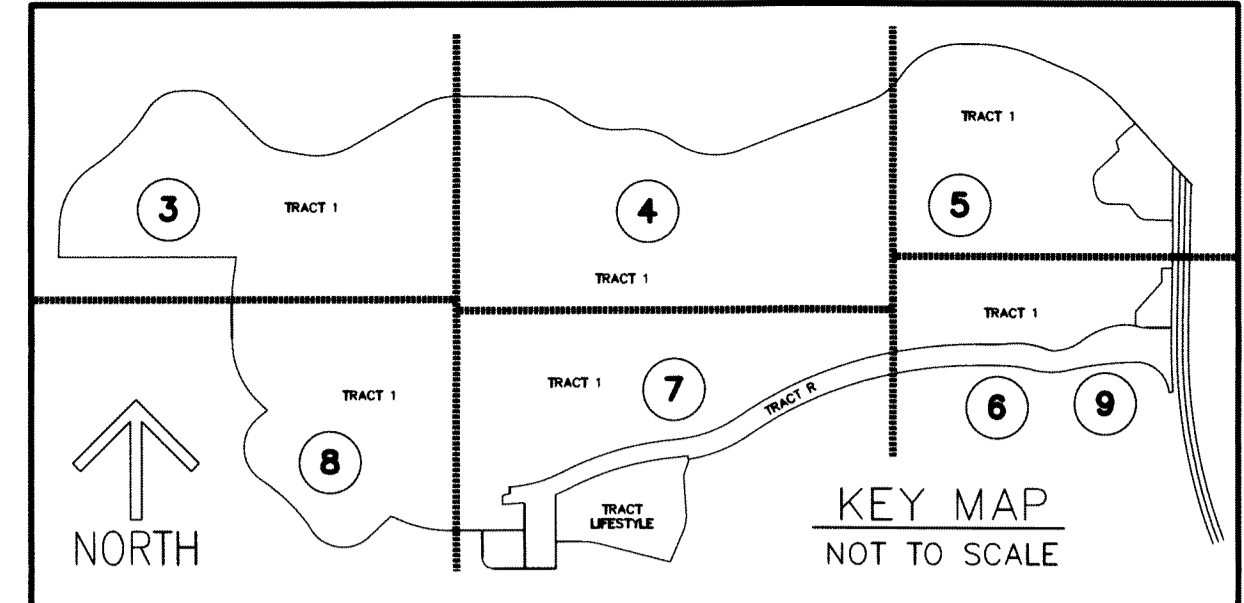


THIS INSTRUMENT PREPARED BY
 RONNIE L. FURNISS
 OF
CAULFIELD and WHEELER, INC.
 SURVEYORS - ENGINEERS - PLANNERS
 7900 GLADES ROAD, SUITE 100
 BOCA RATON, FLORIDA 33434 - (561)392-1991
 CERTIFICATE OF AUTHORIZATION NO. LB3591
 JULY 2022

PANTHER NATIONAL AT AVENIR

BEING A REPLAT OF A PORTION OF AVENIR, PARCEL "A-1",
 AS RECORDED IN PLAT BOOK 127, PAGES 85 THROUGH 109 OF
 THE PUBLIC RECORDS OF PALM BEACH COUNTY, FLORIDA,
 LYING IN SECTIONS 4, 8, & 9, TOWNSHIP 42 SOUTH, RANGE 41 EAST,
 CITY OF PALM BEACH GARDENS, PALM BEACH COUNTY, FLORIDA.



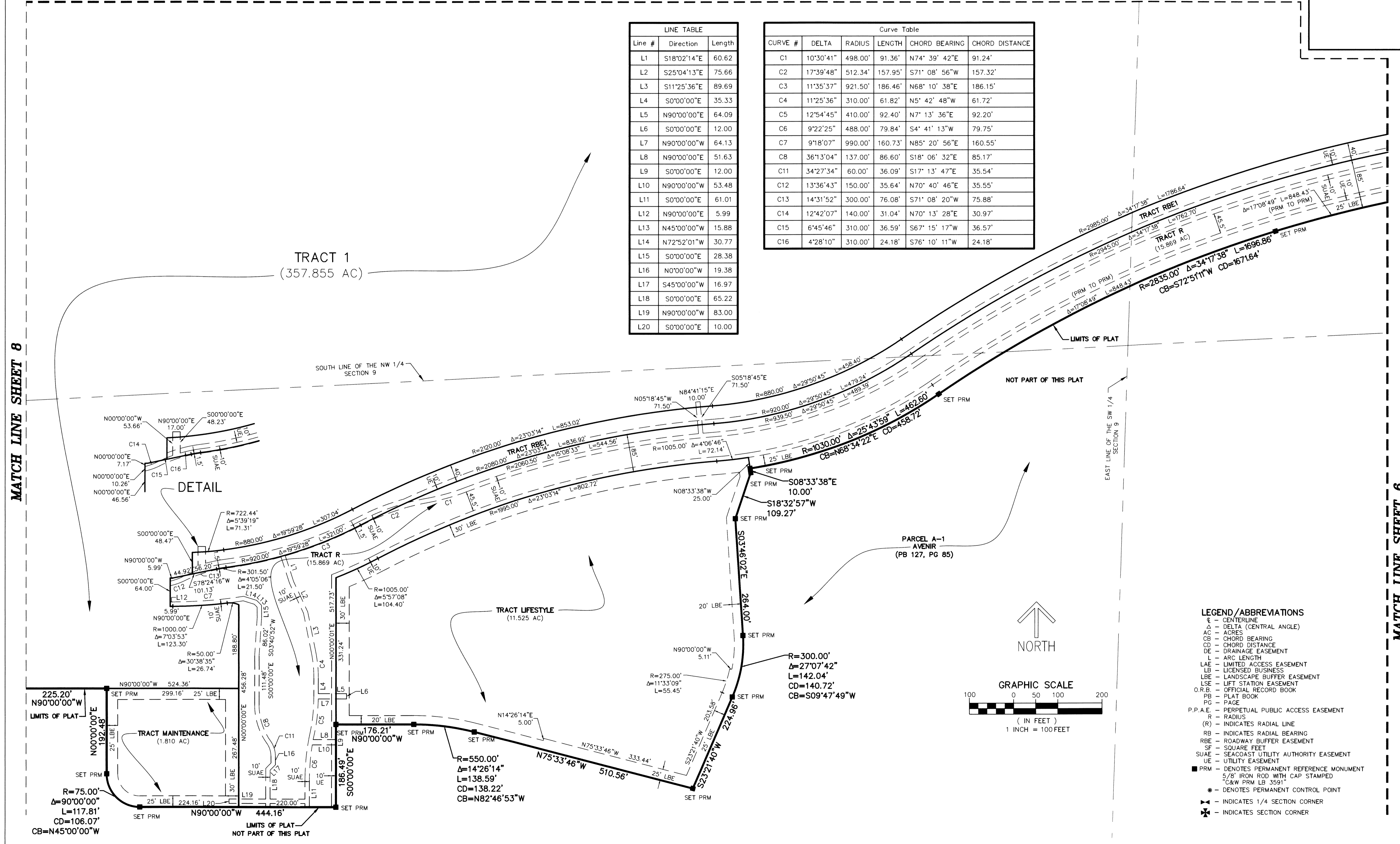
24

MATCH LINE SHEET 4

SHEET 7 OF 9

Line #	Direction	Length
L1	S18°02'14"E	60.62
L2	S25°04'13"E	75.66
L3	S11°25'36"E	89.69
L4	S0°00'00"E	35.33
L5	N90°00'00"E	64.09
L6	S0°00'00"E	12.00
L7	N90°00'00"W	64.13
L8	N90°00'00"E	51.63
L9	S0°00'00"E	12.00
L10	N90°00'00"W	53.48
L11	S0°00'00"E	61.01
L12	N90°00'00"E	5.99
L13	N45°00'00"W	15.88
L14	N72°52'01"W	30.77
L15	S0°00'00"E	28.38
L16	N0°00'00"W	19.38
L17	S45°00'00"W	16.97
L18	S0°00'00"E	65.22
L19	N90°00'00"W	83.00
L20	S0°00'00"E	10.00

CURVE #	DELTA	RADIUS	LENGTH	CHORD BEARING	CHORD DISTANCE
C1	10°30'41"	498.00'	91.36'	N74° 39' 42"E	91.24'
C2	17°39'48"	512.34'	157.95'	S71° 08' 56"W	157.32'
C3	11°35'37"	921.50'	186.46'	N68° 10' 38"E	186.15'
C4	11°25'36"	310.00'	61.82'	N5° 42' 48"W	61.72'
C5	12°54'45"	410.00'	92.40'	N7° 13' 36"E	92.20'
C6	9°22'25"	488.00'	79.84'	S4° 41' 13"W	79.75'
C7	9°18'07"	990.00'	160.73'	N85° 20' 56"E	160.55'
C8	36°13'04"	137.00'	86.60'	S18° 06' 32"E	85.17'
C11	34°27'34"	60.00'	36.09'	S17° 13' 47"E	35.54'
C12	13°36'43"	150.00'	35.64'	N70° 40' 46"E	35.55'
C13	14°31'52"	300.00'	76.08'	S71° 08' 20"W	75.88'
C14	12°42'07"	140.00'	31.04'	N70° 13' 28"E	30.97'
C15	6°45'46"	310.00'	36.59'	S67° 15' 17"W	36.57'
C16	4°28'10"	310.00'	24.18'	S76° 10' 11"W	24.18'



MATCH LINE SHEET 8

MATCH LINE SHEET 6

- LEGEND/ABBREVIATIONS**
- ⊕ - CENTERLINE
 - Δ - DELTA (CENTRAL ANGLE)
 - AC - ACRES
 - CB - CHORD BEARING
 - CD - CHORD DISTANCE
 - DE - DRAINAGE EASEMENT
 - L - ARC LENGTH
 - LAE - LIMITED ACCESS EASEMENT
 - LB - LICENSED BUSINESS
 - LBE - LANDSCAPE BUFFER EASEMENT
 - LSE - LIFT STATION EASEMENT
 - OR.B. - OFFICIAL RECORD BOOK
 - PB - PLAT BOOK
 - PG - PAGE
 - P.P.A.E. - PERPETUAL PUBLIC ACCESS EASEMENT
 - R - RADIUS
 - (R) - INDICATES RADIAL LINE
 - RB - INDICATES RADIAL BEARING
 - RBE - ROADWAY BUFFER EASEMENT
 - SF - SQUARE FEET
 - SUA.E. - SEACOAST UTILITY AUTHORITY EASEMENT
 - UE - UTILITY EASEMENT
 - - DENOTES PERMANENT REFERENCE MONUMENT
 - 5/8" IRON ROD WITH CAP STAMPED "C&W PRM LB 3591"
 - - DENOTES PERMANENT CONTROL POINT
 - ⊠ - INDICATES 1/4 SECTION CORNER
 - ✱ - INDICATES SECTION CORNER

